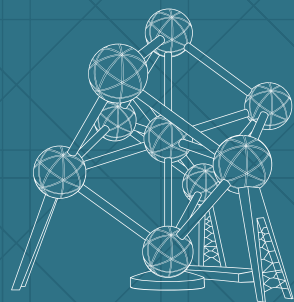

CHRISTINE CONIX



CONCEPTUAL APPROACH TO THE RENOVATION OF THE ATOMIUM

Groups of visitors can now walk across the entire esplanade. We added a new pavilion at the bottom of the Atomium, its inviting character enhances the Atomium and gives it more flexibility because of the various relationships between the foot of the building, the esplanade and the position of the site, which includes Ossegem Park - the green lung of Expo '58. The existing roundabout is transformed into a new, large square offering visitors the opportunity to look at the Atomium from a distance and from different angles.

The new pavilion is the starting point of an artistic landscape tour through this landmark construction. The pavilion receives, orientates, links and sets the scene. It supports the functional aspect of the site through its commercial space, ticket office, sanitary and storage facilities. It

adds an extra dimension to the Atomium as it is skillfully integrated into its surroundings.

Throughout this renovation project our aim was to respect the authenticity of the building and to enhance its contemporary ambitions. We pinpointed the purity of the spheres' design and recreated the atmosphere it once evoked in the least intrusive way possible: covering the interior with galvanized steel and the exterior with stainless steel.

The approach places the Atomium into a new context, giving it back its bygone charm and glory, and emotionally reconnects the public with this unique symbol of Belgium.

CHRISTINE CONIX, CEO CONIX RDBM Architects



Architect

—
renovation of
the Atomium

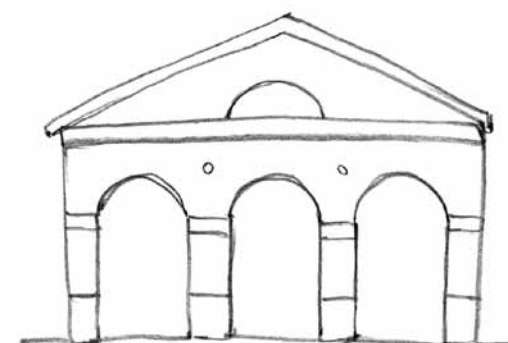
—
www.conixrdbm.com

“THROUGHOUT THIS RENOVATION PROJECT OUR AIM WAS TO RESPECT THE AUTHENTICITY OF THE BUILDING AND TO ENHANCE ITS CONTEMPORARY AMBITIONS.”

Christine Conix

..... SITE DU
GRAND-HORNU

..... PATRIMOINE MONDIAL



PATRIMOINE | ART CONTEMPORAIN | DESIGN

Gratuit le 1^{er} dimanche du mois et le 1^{er} mercredi du mois pour les écoles.
Visites guidées gratuites des expositions tous les jours pour les individuels.

.....
SITE DU GRAND-HORNU

Rue Sainte-Louise 82 - 7301 Hornu, Belgique
www.grand-hornu.eu

